

Black&White|4

A ground-breaking masterpiece
for customers with high standards



The equipment of a Black&White4 is free-configurable and can therefore be optimally adapted to the type and location of use. If in restaurants, fast food chains, petrol stations or bakeries, in the convenience sector, in catering or in larger companies: Because of the flexible machine concept, you will find a solution perfectly adapted to your needs.



Impressive advantages in the multipack

- Powerful allrounder
- Superior Coffee System for exquisite results
- Unique milk frothing technology
- Perfectly designed modular system
- Telemetry system ThermoplanConnect with dual communication
- Resource-efficient cleaning system
- User-friendly and intuitive operation
- Suitable footprint for each operational area
- Refrigerator RL (9 litre cooled milk) or external option
- Bean hopper ~1.7 kg volume
- Powder hopper for up to 2 kg volume
- Flavour unit for up to 4 syrup flavours
- Unique design
- Global service network for efficient support





CT

Kapazitäten (Produkte h)*

240 espresso à 25 ml
200 coffee à 120 ml
120 tea à 300 ml
Bean hopper ~1.7 kg

Connection

1 phase
220–240 VAC/50–60 Hz/13A/16A/32A

Dimensions 320×600×646 mm (W/D/H)

Weight 53 kg



CTM

Capacities (products/h)*

240 espresso à 25 ml
200 coffee à 120 ml
140 cappuccino à 150 ml
120 tea à 300 ml
Bean hopper ~1.7 kg

Connection

1 phase
220–240 VAC/50–60 Hz/13A/16A/32A

3 phases

380–415 VAC/50–60 Hz/3×16 A

Dimensions 320×600×646 mm (W/D/H)

Weight 60 kg



CTM RL

Capacities (products/h)*

240 espresso à 25 ml
200 coffee à 120 ml
140 cappuccino à 150 ml
120 tea à 300 ml
Refrigerator 9 litre
Bean hopper ~1.7 kg

Connection

1 phase
220–240 VAC/50–60 Hz/13A/16A/32A

3 phases

380–415 VAC/50–60 Hz/3×16 A

Dimensions 412×600×646 mm (W/D/H)

Weight 80 kg



CTM F

Capacities (products/h)*

240 espresso à 25 ml
200 coffee à 120 ml
140 cappuccino à 150 ml
120 tea à 300 ml
Bean hopper ~1.7 kg
Syrup 1–4 bottles

Connection

1 phase
220–240 VAC/50–60 Hz/13A/16A/32A

3 phases

380–415 VAC/50–60 Hz/3×16 A

Dimensions 488×600×646 mm (W/D/H)

Weight 70 kg



CTM F RL

Capacities (products/h)*

240 espresso à 25 ml
200 coffee à 120 ml
140 cappuccino à 150 ml
120 tea à 300 ml
Refrigerator 9 litre
Bean hopper ~1.7 kg
Syrup 1–4 bottles

Connection

1 phase
220–240 VAC/50–60 Hz/13A/16A/32A

3 phases

380–415 VAC/50–60 Hz /3×16 A

Dimensions 768×600×646 mm (W/D/H)

Weight 90 kg



CTM P

Capacities (products/h)*

240 espresso à 25 ml
200 coffee à 120 ml
140 cappuccino à 150 ml
120 tea à 300 ml
80 choco beverages
Bean hopper ~1.7 kg
Powder hopper 2 kg

Connection

1 phase
220–240 VAC/50–60 Hz/13A/16A/32A

3 phases

380–415 VAC/50–60 Hz/3×16 A

Dimensions 412×600×646 mm (W/D/H)

Weight 70 kg



CTM P RL

Capacities (products/h)*

240 espresso à 25 ml
200 coffee à 120 ml
140 cappuccino à 150 ml
120 tea à 300 ml
80 choco beverages
Refrigerator 9 litre
Bean hopper ~1.7 kg
Powder hopper 2 kg

Connection

1 phase
220–240 VAC/50–60 Hz/13A/16A/32A

3 phases

380–415 VAC/50–60 Hz/3×16 A

Dimensions 692×600×646 mm (W/D/H)

Weight 90 kg



CTM PF

Capacities (products/h)*

240 espresso à 25 ml
200 coffee à 120 ml
140 cappuccino à 150 ml
120 tea à 300 ml
80 choco beverages
Bean hopper ~1.7 kg
Powder hopper 2 kg
Syrup 1–4 bottles

Connection

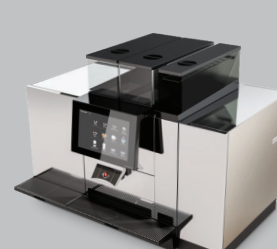
1 phase
220–240 VAC/50–60 Hz/13A/16A/32A

3 phases

380–415 VAC/50–60 Hz/3×16 A

Dimensions 580×600×646 mm (W/D/H)

Weight 84 kg



CTM PF RL

Capacities (products/h)*

240 espresso à 25 ml
200 coffee à 120 ml
140 cappuccino à 150 ml
120 tea à 300 ml
80 choco beverages
Refrigerator 9 litre
Bean hopper ~1.7 kg
Powder hopper 2 kg
Syrup 1–4 bottles

Connection

1 phase
220–240 VAC/50–60 Hz/13A/16A/32A

3 phases

380–415 VAC/50–60 Hz/3×16 A

Dimensions 860×600×646 mm (W/D/H)

Weight 105 kg



CTM plus

Capacities (products/h)*

240 espresso à 25 ml
200 coffee à 120 ml
140 cappuccino à 150 ml
120 tea à 300 ml
Bean hopper ~1.7 kg

Connection

1 phase
220–240 VAC/50–60 Hz/13A/16A/32A

3 phases

380–415 VAC/50–60 Hz/3×16 A

Dimensions 692×600×646 mm (W/D/H)

Weight 90 kg



CTM & CTM RL TwinTower

Refrigerator 9 litre

Bean hopper ~1.7 kg

Connection

1 phase
220–240 VAC/50–60 Hz/13A/16A/32A

3 phases

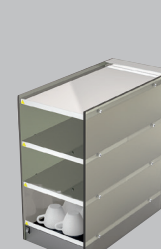
380–415 VAC/50–60 Hz/3×16 A

Dimensions 920×600×646 mm

(W/D/H)

Weight 140 kg

other combinations possible



CH Cup Heater

Capacities

Warming and storage
of 100–150 cups

Connection

220–240 VAC / 50–60 Hz /

100–120 W / 0.5 A

Dimensions 246×490×483 mm

(W/D/H)

Weight 19 kg

* Hourly output depends on cup size
and machine settings

RL Refrigerator large (integrated cooling
unit for 9 litre cooled milk)

F Flavour Unit (drawer for up to
4 syrup flavours)

P Powder Unit (for vending-certified powder)

CH Cup heater

Errors and changes excepted at any time.